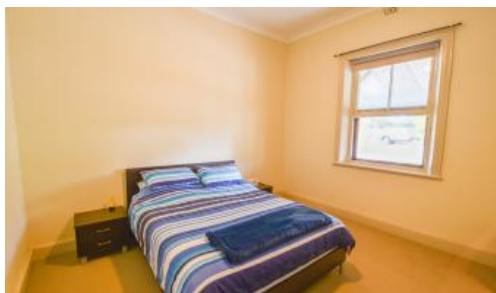


Sold



50 Dunure Terrace, Jamestown



Turn Key Stone Cottage!

EXPRESSIONS OF INTEREST - UNLESS SOLD PRIOR

PRICE GUIDE \$335,000 CLOSING Thursday 11th of May at 3pm.

Wow, 50 Dunure Terrace is a lovely property with great features! Great stone work on the front of the house having been restored in recent years.

The 3 bedrooms with carpet floors and ceiling fans in bedrooms 1 & 3 are comfortable, and the ornate fireplace in Bed 2 and mini orb ceiling in Bed 3 add character to the rooms.

The updated bathroom with floor to ceiling tiles, new shower, single vanity, and toilet are modern and convenient. The spacious kitchen with pine benchtops, plenty of cabinetry, freestanding electric oven, cooktop with rangehood, and dishwasher ideal for cooking and entertaining guests.

The lounge/dining room with a large bay window and double french doors opening to the outdoor patio, slow combustion heater, and split system air-con also make for comfortable and inviting spaces.

With a stainless steel wash trough and plenty of linen storage, making it a functional and convenient laundry. The outdoor patio area paved with ample

3 1 3 928 m2

Price	SOLD
Property Type	Residential
Property ID	9065
Land Area	928 m2

Agent Details

Angus Barnden - 0427 662 812

Office Details

Jamestown
70 Ayr St Jamestown, SA, 5491
Australia
08 8664 1599



space and featuring a gable roof make a great place to relax and entertain.

The single car carport with gravel driveway is convenient, and the fenced rear yard with a lush green lawn, small shrubs, and 3 veggie garden beds is perfect for families with kids or pets. The 6 x 9m shed with concrete floor, power, and double sliding doors are a great addition for tinkers, bike enthusiasts, or anyone in need of extra storage space.

Overall, 50 Dunure Terrace is a beautiful and functional property with great features for comfortable living and entertaining.

Other Features:

- Electric Hot water system
- Solar system
- 2 x Rainwater tanks (one on the shed with pressure pump)
- Rear lane access

Expressions of Interest - Unless Sold Prior - Price Guide \$335,000

Closing date Thursday 11th of May at 3pm.

Land Size: 928 sqm approx.

LGA: Northern Areas Council

Zoned: Neighbourhood

CT5512/23

RLA228106

The above information provided has been furnished to us by the vendor/s. We have not verified whether or not that information is accurate and do not have any belief in one way or the other in its accuracy. We do not accept any responsibility to any person for its accuracy and do no more than pass it on. All interested parties should make and rely upon their own inquiries in order to determine whether or not this information is in fact accurate.