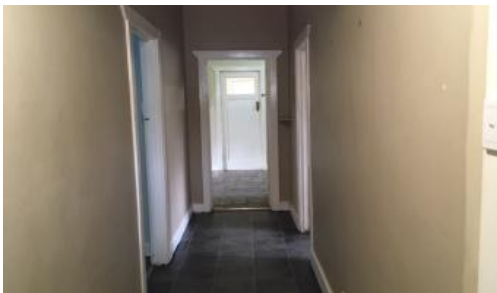


Sold



17 Princess St, Peterborough



Traditional Railway home in Fantastic condition!

A blank canvas property with great return and excellent tenant, this property would be best suited to an investor or first home buyer looking to make it a home. Cleared and levelled block with large shed partially concreted and rear lane access.

- 3 Bedrooms with potential for Walk In Robe with some tweaking in the master
- 1 Bathroom with shower over bath, single vanity and separate toilet
- Lounge room has slate tile floor and split system air-con with ceiling fan
- Open plan Kitchen also having laminate benchtops and freestanding electric oven and cooktop
- Laundry has tiled floor and stainless steel wash trough
- Wonderful large open backyard with separated area front to back
- Shed 12m x 6m approx. with service pit, partial concrete floor and power connected
- Electric hot water system

🛏 3 🏠 1 🚗 4 📏 821m2

Price	SOLD
Property Type	Residential
Property ID	8917
Land Area	821 m2

Agent Details

Angus Barnden - 0427 662 812

James Wardle - 0407 362 105

Office Details

Jamestown

70 Ayr St Jamestown, SA, 5491

Australia

08 8664 1599

WARDLE
Co.
Real Estate

Currently leased for \$185 per week Fixed term until End of April 2023

Land Size: 821 sqm approx.

Zoned: Neighbourhood

LGA: District Council of Peterborough

CT5951/991

The above information provided has been furnished to us by the vendor/s. We have not verified whether or not that information is accurate and do not have any belief in one way or the other in its accuracy. We do not accept any responsibility to any person for its accuracy and do no more than pass it on. All interested parties should make and rely upon their own inquiries in order to determine whether or not this information is in fact accurate.