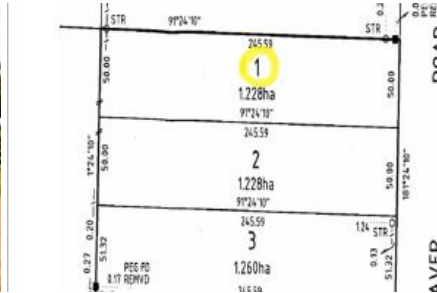


Sold



35 Laver Rd, Kadina



## ESTABLISHED RURAL LIVING ALLOTMENT

- \*1.228 Ha (3.03 acre) allotment
- \*Power to boundary
- \*Restricted water supply
- \*Rural fencing and feature entrance
- \*Established trees
- \*Zoned Rural Living

Contact Brenton for an inspection

RLA228106

The above information provided has been furnished to us by the vendor/s. We have not verified whether or not that information is accurate and do not have any belief in one way or the other in its accuracy. We do not accept any responsibility to any person for its accuracy and do no more than pass it on. All interested parties should make and rely upon their own inquiries in order to determine whether or not this information is in fact accurate.

1.23ha

<b>Price</b>	SOLD
<b>Property Type</b>	Residential
<b>Property ID</b>	8696
<b>Land Area</b>	1.23 ha

### Agent Details

Brenton Brind - 0408 955 182

### Office Details

Kadina  
6A Graves St Kadina, SA, 5554  
Australia  
(08) 8821 3666

