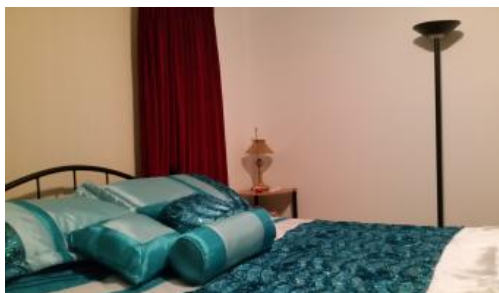


Sold

51 Blight Rd, Nelshaby



Solid home with land and Views

Nestled between the picturesque Southern Flinders Ranges (Nelshaby) with its stunning sunrises and the breath taking view of Spencer Gulf sunset, sits this large double brick family home. Comprising of four bedrooms / 3 + 1 study. Master with walk in robe and large ensuite. Two others with floor to ceiling wardrobes and ceiling fans. 6 door linen press from floor to ceiling in passage. Solid wood decorative front door, stunning entrance, formal lounge, formal dining with bi-fold doors. Family room with combustion wood heater and brick feature wall. Big country style eat in kitchen, with ample quality cupboards, heaps of bench space, ceiling fan and sky light. Large tiled floor games room with undisturbed views of the Spencer Gulf with R/C A/C and vertical blinds to all 7 large windows. Alfresco area entrance to games room. Other features include 9 ceilings, ceiling rosettes, decorative cornices, quality curtain rods plus vertical blinds to all rooms. Quality light fittings and fixtures ducted evaporative air-conditioning. New carpets to bedrooms and formal areas. Tiled entrance, passage, family room, kitchen and all wet areas. Front veranda under main roof, wrought iron posts and lace work, slate look concrete to veranda. Established gardens and manicured lawns. Built by owners with dedication, using high quality materials. With all the hard work done for you, just move in and enjoy RLA228106

🛏 4 🏠 2 📏 2.24ha

Price	SOLD
Property Type	Residential
Property ID	8599
Land Area	2.24 ha

Agent Details

Lee Jackson - 0427 440 954

Office Details

Port Pirie
90 Florence Street Port Pirie, SA,
5540 Australia
08 8633 4555



The above information provided has been furnished to us by the vendor/s. We have not verified whether or not that information is accurate and do not have any belief in one way or the other in its accuracy. We do not accept any responsibility to any person for its accuracy and do no more than pass it on. All interested parties should make and rely upon their own inquiries in order to determine whether or not this information is in fact accurate.