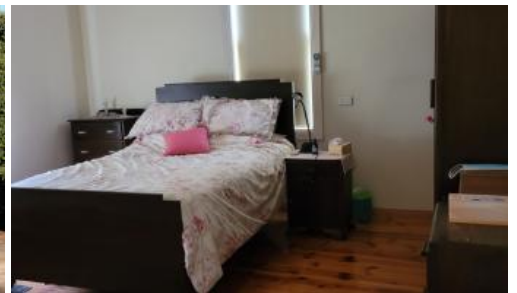


Sold



22 Darbon Tce, Crystal Brook



## LARGE FAMILY HOME

Set on a corner allotment with a land area of approx 1515 square meters is this four bedroom stone home.

Leading from the spacious centre hall way is the 4 bedrooms, lounge, formal dine area, spacious kitchen and wet areas. Plenty of room in this one adding your own touch.

Large shed approx 6.3m x 12.3m with two sliding doors 3 meters high to fit the caravan or boat. Concrete floor, power and pit. Various other shedding.

Inspection recommended to appreciate the room this one has.

Suit the large family

The above information provided has been furnished to us by the vendor/s. We have not verified whether or not that information is accurate and do not have any belief in one way or the other in its accuracy. We do not accept any responsibility to any person for its accuracy and do no more than pass it on. All interested parties should make and rely upon their own inquiries in order to determine whether or not this information is in fact accurate.

🛏 4 📶 1 🚗 5 📏 1,515m<sup>2</sup>

<b>Price</b>	SOLD
<b>Property Type</b>	Residential
<b>Property ID</b>	4588
<b>Land Area</b>	1,515 m <sup>2</sup>

### Agent Details

Martin Stringer - 0417 897 159

James Wardle - 0407 362 105

### Office Details

Crystal Brook

50 Bowman Street Crystal Brook, SA,  
5523 Australia

08 8636 2351

**WARDLE**  
Co.  
Real Estate