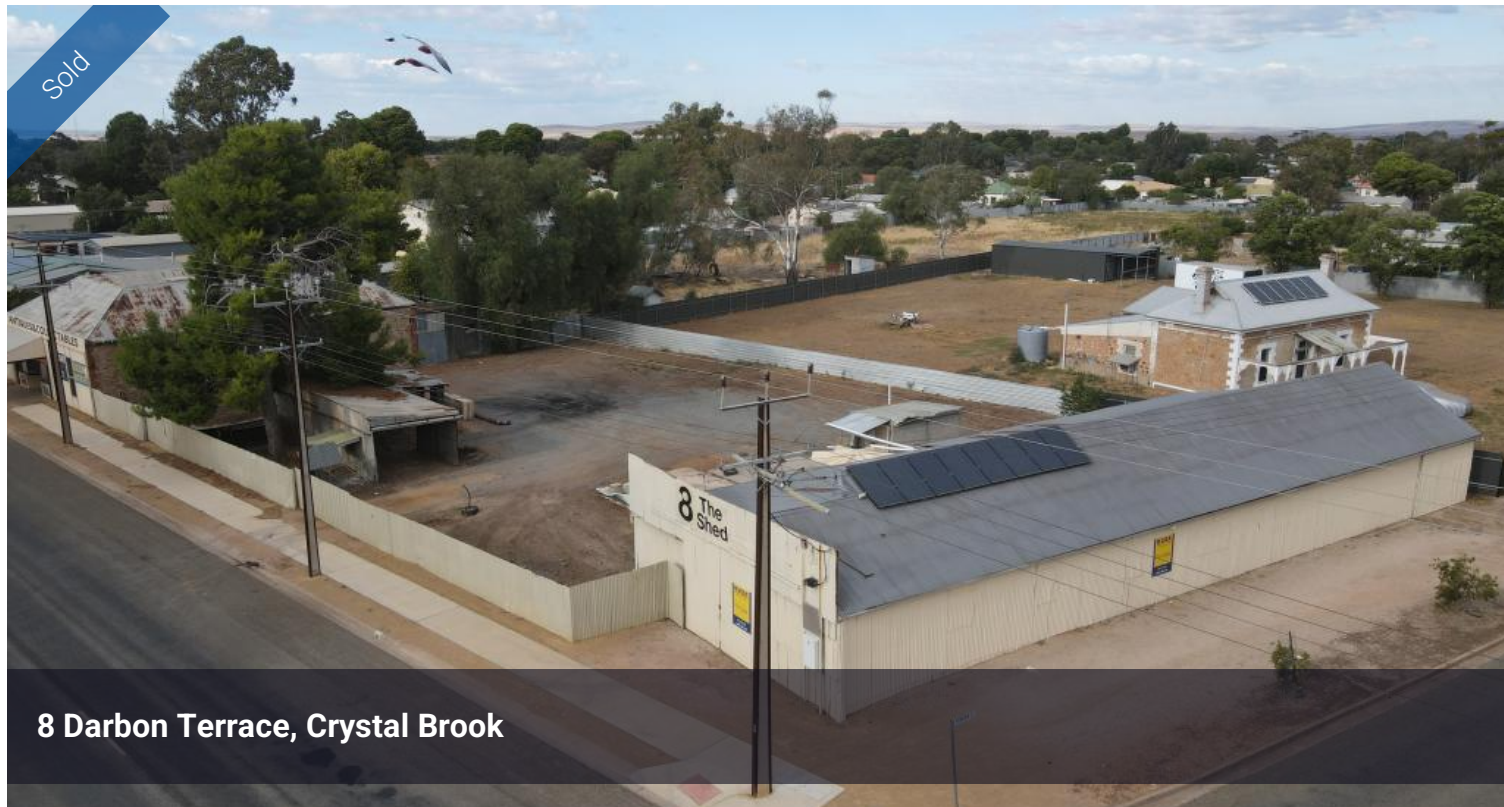


Sold



8 Darbon Terrace, Crystal Brook



Large block, Large Shed!

An opportunity here for the astute buyer to acquire a large shed with the option to build subject to consent.



- Large 29m x 9m* shed with concrete floor and 3 phase power
- Large corner allotment with access via Darbon Terrace and Forgan Street.
- Male and female bathroom amenities with gas hot water system
- 8 Panel solar system feeding the grid & 22,500Litre poly tank
- Land size of 1,613sqm*
- Zoned suburban neighbourhood

CT5632/459

*Denotes Approximate

RLA228106

The above information provided has been furnished to us by the vendor/s. We have not verified whether or not that information is accurate and do not have any belief in one way or the other in its accuracy. We do not accept any responsibility to any person for its accuracy and do no more than pass it on. All interested parties should make and rely upon their own inquiries in order to determine whether or not this information is in fact accurate.

 6  1,613 m2

Price SOLD for \$145,000

Property Type Residential

Property ID 4558

Land Area 1,613 m2

Agent Details

James Wardle - 0407 362 105

Office Details

Crystal Brook

50 Bowman Street Crystal Brook, SA,

5523 Australia

08 8636 2351

WARDLE
Co.
Real Estate