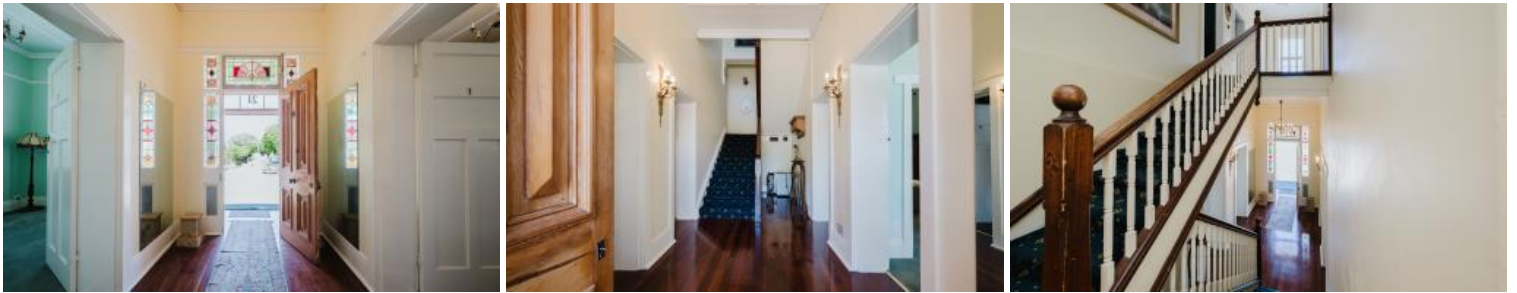


PEARCE'S BUILDINGS

21 Commercial St, Burra



Historic Grandeur on Commercial Street

Positioned in the heart of the renowned historical township of Burra, 21 Commercial Street stands as a commanding and rare offering. An exceptional c.1914 bluestone residence crafted by renowned local builder John Pearce. Set upon a substantial 714sqm* allotment, this landmark property seamlessly blends grand proportions, enduring craftsmanship, and modern functionality.

Upon entry, an impressive central hallway immediately sets the tone, where soaring ceilings, ornate cornices, and elegant rose ceiling chandeliers create an atmosphere of timeless sophistication. Every detail reflects the character of its era, thoughtfully preserved to honour the home's rich heritage.

Comprising eight generously scaled bedrooms, two bathrooms, and four toilets, providing an expansive and highly adaptable floorplan. Warm and inviting throughout, the interiors showcase a collection of sought-after original features, including polished Baltic pine floorboards, ten open fireplaces, brass fittings, and intricate period detailing rarely seen today.

At the heart of the home, the well-appointed kitchen balances heritage charm with modern practicality. Offering ample storage, a dishwasher, and a large freestanding oven with a gas cooktop. Flowing into a large open-plan dining

8 2 6 714m2

Price	\$899,000
Property Type	Residential
Property ID	12082
Land Area	714 m2

Agent Details

Lauren Ferme - 0466 072 288
James Wardle - 0407 362 105

Office Details

Clare
190 Main North Rd Clare, SA, 5453
Australia
08 8842 1154



and living space towards the rear of the home.

Climate comfort includes two separate evaporative air conditioning systems, allowing for efficient cooling across the expansive floorplan.

Outdoors, a generous covered pergola creates an inviting all-weather entertaining area—ideal for hosting gatherings or simply enjoying the peaceful surrounds. Adding further appeal is a substantial 10.5m x 7.5m* shed, complete with dual roller doors, offering outstanding versatility as a workshop, storage facility, or secure space for vehicles and collections, which is accessible via Mount Pleasant Road.

Rich in history and commanding in scale, this prominent Commercial Street address represents a rare opportunity to secure a significant piece of South Australia's architectural legacy. A truly remarkable property that delivers character, scale, and enduring appeal in equal measure. 'Pearce's Building' needs to be viewed to appreciate the abundance within this property.

\$899,000

Lauren Ferme

0466 072 288

*Denotes approximate. RLA228106

The above information provided has been furnished to us by the vendor/s. We have not verified whether or not that information is accurate and do not have any belief in one way or the other in its accuracy. We do not accept any responsibility to any person for its accuracy and do no more than pass it on. All interested parties should make and rely upon their own inquiries in order to determine whether or not this information is in fact accurate.