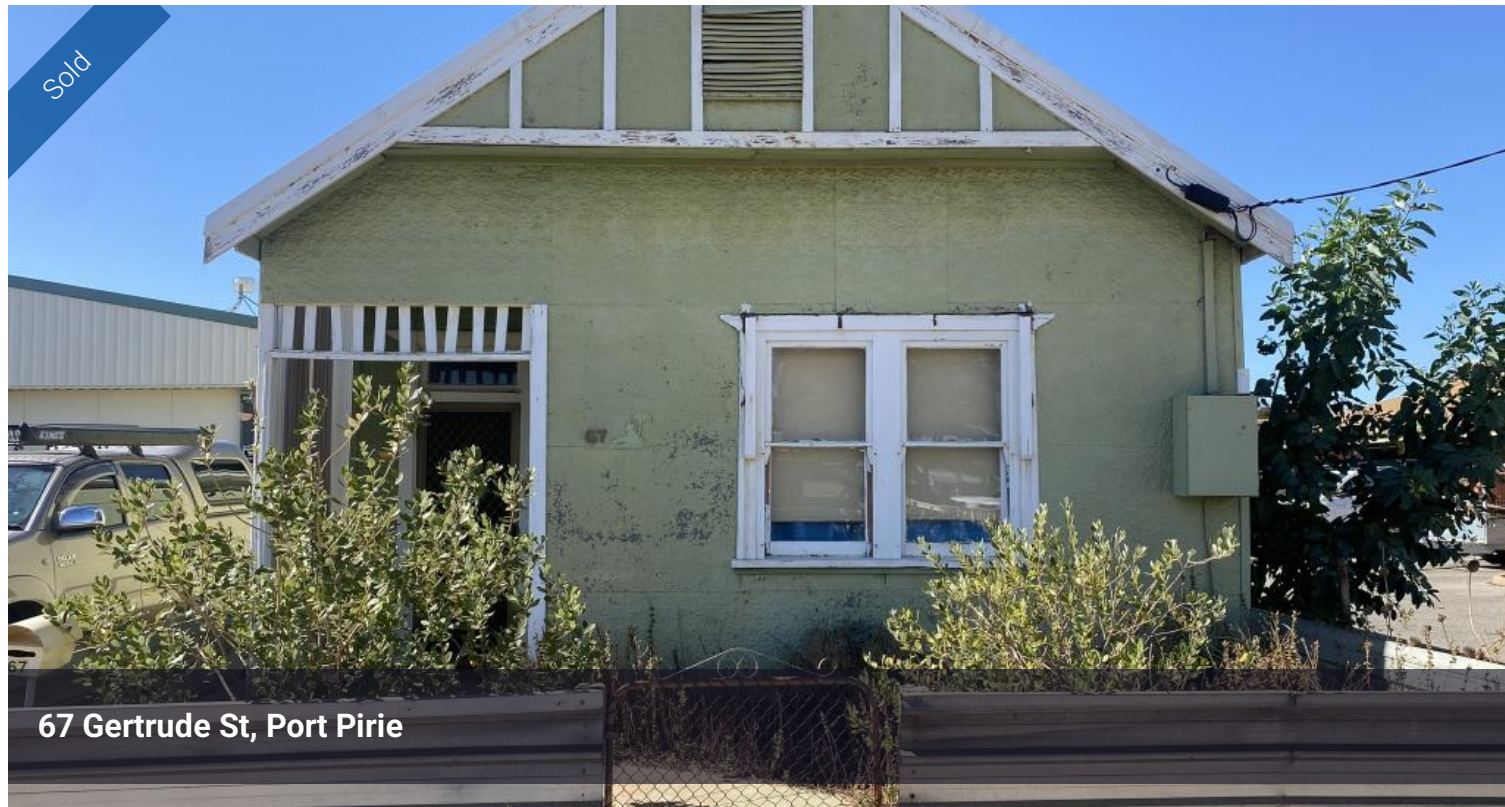
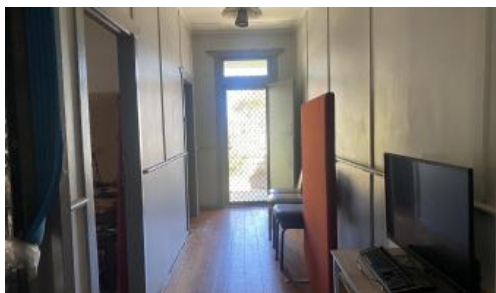


Sold



67 Gertrude St, Port Pirie



Flexible Investment or Commercial Opportunity – Unique CBD Landholding

Positioned in the heart of Port Pirie's Regional Centre and directly opposite the GP Plus building, this property presents a rare opportunity for investors or business owners alike.

Currently returning \$170 per week on a **periodic lease**, the property offers flexibility for continued investment or repurposing into a professional office (STCC). The existing layout includes two bedrooms (or potential office spaces), a lounge (ideal for reception or waiting area), kitchen, bathroom, and a split system air conditioner.

While the home is functional, it does show signs of wear and tear and would benefit from a cosmetic refresh to maximise its appeal and usability.

What truly sets this property apart is the **uniquely configured 426m² landholding** — unusually deep and narrow for a CBD block, providing rear access and potential for creative use or development (subject to council consents).

Whether you're looking to enhance your investment portfolio or establish a presence in a high-profile central location, this one is well worth your

🛏 2 🚿 1 📏 426 m2

Price SOLD for \$160,000

Property Type Residential

Property ID 11438

Land Area 426 m2

Agent Details

Lee Jackson - 0427 440 954

Office Details

Port Pirie

90 Florence Street Port Pirie, SA,
5540 Australia
08 8633 4555

WARDLE
Co.
Real Estate

inspection.

Zoned - URBAN ACTIVITY CENTRE

COUNCIL RATES: Approx. \$1558 per annum

Contact Lee Jackson on 0427440954 today to explore the potential.

RLA228106

The above information provided has been furnished to us by the vendor/s. We have not verified whether or not that information is accurate and do not have any belief in one way or the other in its accuracy. We do not accept any responsibility to any person for its accuracy and do no more than pass it on. All interested parties should make and rely upon their own inquiries in order to determine whether or not this information is in fact accurate.