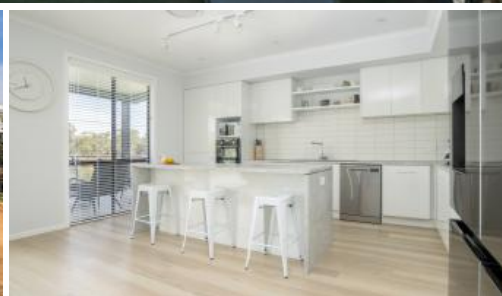


Sold



STUNNING NEW HOME ON THE MIGHTY RIVER MURRAY

This spacious and luxurious home offers a perfect blend of modern comforts and breathtaking river views. Situated on the banks of the Mighty River Murray, this fully furnished property boasts a generous, open-plan design that's ideal for relaxed living and entertaining.

The heart of the home features a large, fully functional kitchen, which flows seamlessly into the open dining and family areas. These living spaces open up to a tiled, under-roof balcony that offers uninterrupted views of the river — the perfect spot to unwind.

With four large bedrooms and an additional living area, this home has ample space for the entire family. The main living area also opens to a rear and side balcony, offering even more outdoor space to enjoy. The modern bathroom includes a separate W/C, while a storeroom provides convenient storage.

The lower floor is equipped with a bathroom, laundry, and a storage room with air-conditioning, leading out to a large outdoor entertainment area fitted with fully automatic roller shutters for added privacy and comfort.

Outside, you'll find a spacious 6m x 9m* shed with a carport, including power and a concrete floor, located on a separate 450sqm* allotment. The property is beautifully landscaped, featuring retained walls, a lawn area leading right to the

4 2 2 1,100 m²

Price SOLD for \$1,560,000

Property Type Residential

Property ID 11405

Land Area 1,100 m²

Agent Details

Brenton Brind - 0408 955 182

Office Details

Kadina

6A Graves St Kadina, SA, 5554

Australia

(08) 8821 3666

WARDLE
Co.
Real Estate

water's edge, and a fully fenced yard for privacy and security.

With so many hidden features, this home must be seen to be fully appreciated.

Don't miss your chance to own this remarkable property, an inspection is highly recommended!

This property has been built to comply with the new Planning Code for the River Murray Flood Plain and is fully equipped with a 11.21 kW* Solar and 12.8 kW* Battery System.

Council Rates 24/25 - \$4078.60 per annum (includes STEDS)

*Denotes approximate

The above information provided has been furnished to us by the vendor/s. We have not verified whether or not that information is accurate and do not have any belief in one way or the other in its accuracy. We do not accept any responsibility to any person for its accuracy and do no more than pass it on. All interested parties should make and rely upon their own inquiries in order to determine whether or not this information is in fact accurate.