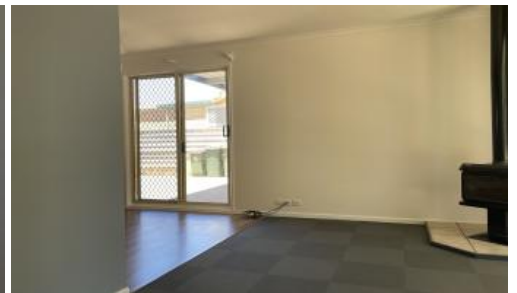


Sold



493 Senate Road, Port Pirie



KICKSTART YOUR REAL ESTATE JOURNEY

SITUATED ON A GENEROUS 714M2(APPROX) ALLOTMENT WITH VIEWS OF THE FLINDERS RANGES OVER THE BACK FENCE THIS PROPERTY HAS HAD SOME RECENT UPGRADES WITH SCOPE TO TAKE TO THE NEXT LEVEL.

- 3 Bedrooms with the main having built-in wardrobe
- Spacious light filled lounge with wood heater
- Re-Furbished galley style kitchen with electric oven
- Dining area with refrigerated airconditioning with convenience of sliding door access to the double carport with roller doors
- Neat bathroom with alcove and vanity
- Separate toilet
- Laundry with direct access to the rear verandah
- Ducted evaporative airconditioning
- Approximate 20'x30' shed with floor and power with apron off the front
- Sundry shed
- Shade house
- Shaded gardens
- Allotment size of approximately 714m2

🛏 3 🏠 1 🚗 4 📏 714m2

Price SOLD for \$329,000

Property Type Residential

Property ID 11270

Land Area 714 m2

Agent Details

Sean Manfield - 0438 864 146

Office Details

Port Pirie

90 Florence Street Port Pirie, SA,

5540 Australia

08 8633 4555



A great first home or step up in a popular location with good bones and is sure to attract some attention in the current market.

RLA228106

The above information provided has been furnished to us by the vendor/s. We have not verified whether or not that information is accurate and do not have any belief in one way or the other in its accuracy. We do not accept any responsibility to any person for its accuracy and do no more than pass it on. All interested parties should make and rely upon their own inquiries in order to determine whether or not this information is in fact accurate.